

# Neolable

Portable magnetic work table



35x33 cm

Work area

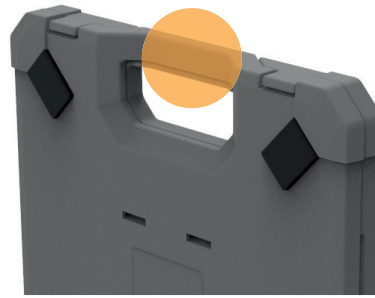


Carrying capacity



Electrically isolated

## User manual



Handle for easy transport.



The table mounts to magnetic surfaces. It is held in place with 4 strong magnets.



The tabletop is folded down and the mouse pad is mounted on the side. The table is now ready for use.

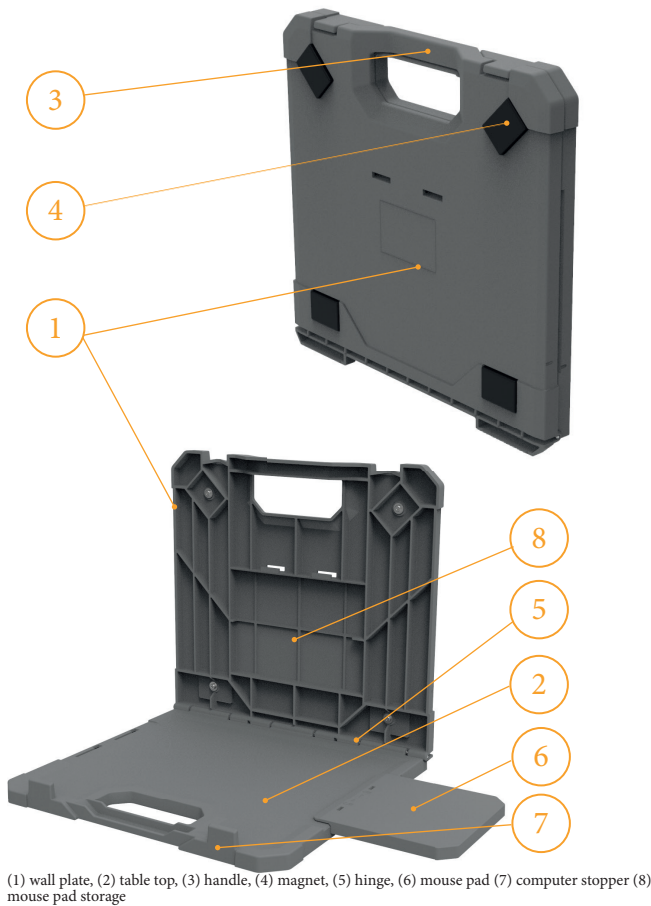
\*Mouse pad accessories



The tabletop is folded and the mobile work-table is removed by pulling the handle.



## Handling instructions



Read all safety warnings and instructions before use. Failure to follow the instructions below may result in electric shock and/or personal injury. Save all warnings and instructions for future reference. The company Baarris Industries Aps shirk form responsibility of material damage as well as personal injury in connection with the use and handling of the product.

### Safety Warnings

- 1 Before setting up the product, ensure that the surface on which the product is to be mounted is clean and Smooth.
- 2 Do not load the product with more than the recommended 8 kg. Exceeding the recommended weight may result in the product becoming detached, possibly causing material or personal injury.
- 3 Be careful when mounting and using the product on potentially electrically charged objects.
- 4 Make sure that the magnets (4) are not dirty. Dirty magnets can cause reduced load-bearing capacity.
- 5 Check that the 4 magnets on the table are not damaged or worn before use. Damaged or worn magnets can cause material and/or personal injury. If the magnets have major tears or wear in the rubber coating that exposes the metal, the magnets must be replaced before use (see Maintenance).
- 6 When assembling, keep objects, hands and fingers away from the gap between the product's wall plate (1) with the 4 magnets and the assembly area.  
Make sure that the tabletop (2) is clear before folding the table. Otherwise, the product may be damaged.
- 7 Make sure that the table's hinges (5) can move freely. Remove objects that may prevent free movement. Otherwise, the product may be damaged.
- 8 Do not use the product for purposes for which the product is not intended. Otherwise, the product may be damaged.
- 9 Do not place or apply chemicals on the product, as this may damage the product.

### Storage

- Store the product dry
- Store the product at temperatures between 15 C ° 25 C °
- DO NOT store the product in direct sunlight.

### Use

- 1 Mount the mobile workbench on a magnetic surface. Make sure to hold the product by the handle (3) when setting up the product.
- 2 Fold down the tabletop (2). Check that the tabletop is level and that the tabletop is securely attached to the mounted area.
- 3 Place and place the computer, tools and other items on the tabletop (2).
- 4 After use, remove all objects from the tabletop (2) and fold up the tabletop.
- 5 Grasp the handle (3) and carefully pull the product out of the mounting location.
- 6 Transport the product by the handle (3).

### Technical specification

- Weight: 1.5 kg
- Material: PC-ABS
- Electrical insulation: Max. 230V
- Operating temperature: -20 C to 45 C
- Dimensions in mm. L:348 H:37 W:353 (Folded out: L:348 H:345 W:353)
- Attractive force per magnet: 105N (approx. 10kg) total of 4 magnets.
- Maximum load capacity: 8 kg\*

\*The product's load-bearing capacity is tested by mounting the product's 4 rubber-mounted magnets (each magnet has a linear attraction force of 105N) against a 5mm thick steel plate. The tabletop is folded down and the weight is placed close to the wallplate.

### Functions

- ① Wall plate, for mounting on magnetic surfaces.
- ② Tabletop, for placing tools, computer and other items.
- ③ Handle for setting up and taking down the product, as well as for transport.
- ④ Rubber covered magnets.
- ⑤ Hinge.
- ⑥ Mouse pad.
- ⑦ Computer stopper.
- ⑧ Storage for mouse pad.

### Maintenance

- Keep magnets and hinge free of dust and dirt.
- Clean the product with a dry or damp cloth. Do not use solvents or chemicals for cleaning.
- Check that the product is not damaged. Replace or repair before use.
- Wearparts such as magnets must be replaced if they are worn and/or damaged, it is recommended that all 4 magnets are replaced at the same time (new magnets can be ordered from the manufacturer).
- Defective hinge. Clean and lubricate/oil the hinge, if this does not solve the problem, replace the defective hinge (new shaft can be ordered from the manufacturer).
- After maintenance, ensure that screws and components are correctly seated and tightened.
- Only use original spare parts. This ensures that the safety and functionality of the product are maintained.

### Disposal - Environment

Dispose of the product in accordance with waste management regulations. By disposing of the product correctly, you contribute to the recycling of materials. The manufacturer is happy to accept discarded products.

### Warranty

Warranty period: The product is guaranteed for 1 year from the date of purchase (receipt of purchase must be documented)

Warranty conditions: All points mentioned in this document must be fully complied with.

In case of claims under the warranty:

- 1 Contact the manufacturer.
- 2 Return the product to the manufacturer
- 3 Enclose the receipt of purchase together with the returned product.

Any non compliance with these points will prevent Baarris Industries I/S from receiving the product under the product warranty.