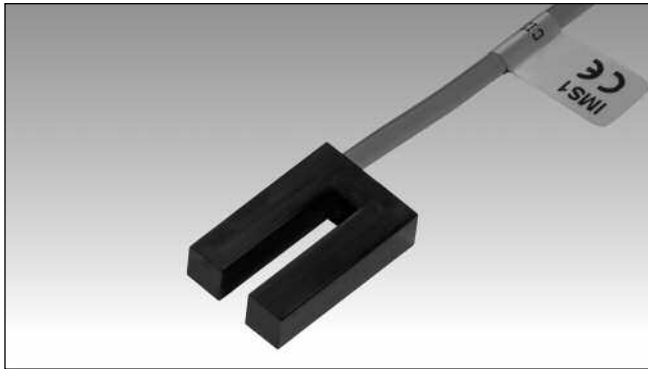


Proximity Magnetic Sensors Slot Sensors IM Series



- Slot plastic housing
- NC or CO output functions
- Small dimensions

Product Description

In IM series the minimum air gap from ferromagnetic parts is 10 millimeters; the minimum distance between the fixing holes of two continuous switches is 7 cm. The optimum dimensions concerning soft iron actuators is 15 x 40 x 1 mm.

Ordering Key

IM S 1

Type _____
 Output function _____
 Reed contact type _____

Type Selection

Housing dimensions	Connection	Output function	Reference
28 x 18.5 x 7 28 x 18.5 x 7	PVC cable L= 0.5m PVC cable L= 0.5m	NC CO	IM C 3 IM S 1

Dimensions are specified in millimeters (mm)

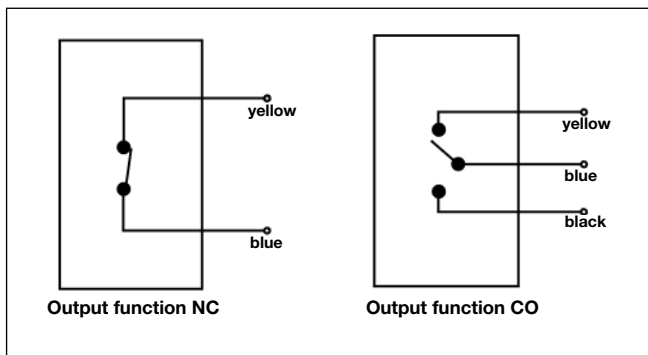
Output Specifications

Output IMC3 IMS1	NC Change-over
Contact ratings	
Max Switching Voltage IMC3 IMS1	500 VAC 100 VAC
Max Switching Current IMC3 IMS1	0.5 A 0.25 A
Max Switching Power IMC3 IMS1	10 VA 5 VA

General Specifications

Operating temperature	-25 to +75 °C
Degree of protection	IP 67
Housing	
Dimensions Material	28 x 18.5 x 7 mm Plastic
CE-marking	Yes

Wiring Diagrams



Dimensions

