

Energy Management

Split core current sensors

Type CTV4X

CARLO GAVAZZI



- Split core current sensor for retrofit applications
- Accuracy class 1%
- 0.333V standard secondary output

Product description

Split core current sensor with compact dimensions, suitable for retrofit applications when used in combination with EM21-72V energy meter.

How to order **CTV4X 400A 333MV**

Model _____
 Primary current _____
 Secondary output _____

Type Selection

Primary current

400A: 400A primary current input

Secondary output

333MV: 333mV secondary output voltage

Specification

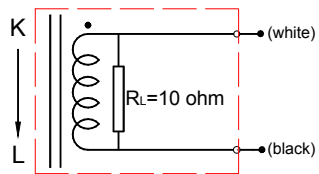
Electrical specifications

Rated Primary Current	400A (20-480A max)
50/60Hz	400A/333mV
Current ratio	130 Ω max
DC resistance at 20°C	1%
Accuracy	0.5%
Linearity	≤2°
Phase error at rated current range @RL =50 Ω	from -40 to 85°C
Operating temperature range	from -45 to 90°C
Storage temperature range	3500V/1mA/1min
Dielectric withstand voltage (Hi-pot)	DC500V/100MΩ min
Insulation Resistance	660 V
Max primary cable system voltage	

Mechanical specification

Housing material	PP3307
Opening Angle	180 degree
Output terminal	UL1015 22AWG (0.32mm ²) PVC wire
Approx weight	200g
Approvals	CE, cURus (cURus: max primary current limited to 200 A)

Wiring diagram



Dimensions

